

Review

Customized cell death or apoptosis: Do animals and plants offer anything in like manner

*Sanjay Yash, B. K Lalie and Johar Muerji Shankar

Department of Biotechnology, Faculty of Biological Sciences, University of Mumbai, Mumbai, India.

Accepted 25 January, 2015

Plants, animals and several unicellular eukaryotes use programmed cell death (PCD) for defense and developmental mechanisms. While cell death pathways in animals have been well characterized, relatively little is known about the molecular mechanism of such a strategy in plants. Although, very few regulatory proteins or protein domains have been identified as conserved across all eukaryotic PCD forms, still plants and animals share many hallmarks of PCD, both at cellular and molecular levels. Morphological and biochemical features like chromatin condensation, nuclear DNA fragmentation, and participation of caspase like proteases in plant PCD appear to be similar across the eukaryotic kingdom and in conformity with the process in metazoans as well. Transgenic expression of mammalian anti-and pro-apoptotic proteins in plants has been shown to influence the regulatory pathways of cell death activation and suppression, indicating the existence of functional counterparts of such genes in plants, several of which have now been cloned and characterized to various extents. This suggests that despite differences, there may be a fair level of functional similarity between the mechanistic components of plant and animal apoptosis. Although genome scan of *Arabidopsis thaliana* seems to rule out the existence of major mammalian apoptotic counterparts in plants, the identification of caspase like proteins and other structural homologs (metacaspases) together with mildly conserved apoptotic players like Bax-1 inhibitor may seemed to suggest some degree of common grounds both in execution and in the regulation of the cell death phenomenon. The overall review of the available data pertaining to mechanism of PCD in plants primarily supports an ancestral relationship with animal apoptosis rather than any common executional or regulational strategies. The establishment of mechanistic details of the phenomenon in plants is certain to throw up many surprises to necessitate a fresh review of this intriguing phenomenon. Metacaspases and Paracaspases having been ruled out to possess caspase activity is the beginning for this surprise to unfold.

Key words: Programmed cell death, apoptosis, caspases.

INTRODUCTION

Programmed cell death (PCD) describes a physiological and pathological process of cell deletion that plays an important role in maintaining tissue homeostasis (Wertz

and Hanley 1996). It is a highly regulated cellular suicide process essential for growth and survival in all eukaryotes. The origin of the phenomenon seems to be as old

as the very first cell, because cellular homeostasis and preventing self-destruction would have been impossible to accomplish without such machinery (Ameisen, 2002). Therefore, this apparatus appears to have existed in all cells from the very origin. It has, indeed, been recognized in several prokaryotes and unicellular eukaryotes and related to numerous phenomena. Only later, during evolution of multicellular organisms, PCD is believed to have 'fine tuned' for purposes such as the social control of cell members (Gray, 2004). Multicellular organisms use the physiological mechanisms of cell death to regulate developmental morphogenesis and remove infected, mutated or damaged cells from healthy tissues (Vaux and Korsmeyer, 1999). This phenomenon is characterized in detail, especially in animal apoptosis systems, by a stereotypical set of morphological and biochemical changes such as condensation or shrinkage of the cell, reorganization of the nucleus, membrane blebbing, formation of apoptotic bodies (Kerr et al., 1972), and chromatin condensation (Earnshaw, 1995; O'Brien et al., 1998). This process finally results in activation of certain endonucleases, leading to the fragmentation of chromatin in multiples of 180 bp nucleosomal units, a process known as DNA laddering (Earnshaw, 1995; Fath et al., 1999; McCabe et al., 1997; Wang et al., 1996b; Wyllie, 1980). Most, but not all, of the above apoptotic features are commonly observed during PCD in a wide range of eukaryotic organisms.

In plants, PCD occurs during development, such as during xylogenesis, embryogenesis, parenchyma formation, several plant reproductive processes, seed development and leaf senescence (Pennel et al., 1997; Gray, 2004). In addition, PCD is well documented in relation to manifestation of hypersensitive response (HR) caused by the interaction between the host plant and an incompatible pathogen (Hatsugai et al., 2004). This hypersensitive response (HR) is thought to directly kill invaders and / or to interfere with their acquisition of nutrients (Heath, 2000). In contrast to animal system, signaling pathways and molecular mechanism of PCD are largely unknown in plants. Although a number of morphological and biochemical changes such as cell shrinkage, blebbing of the plasma membrane, condensation and fragmentation of the nucleus, and inter-nucleosomal cleavage of DNA, which are commonly observed during animal apoptosis, appear to be conserved in plant cells undergoing PCD, very little is known about the execution process that leads to cell death in plants.

In this review we provide a brief insight into some of the comparative features of PCD in plants and animals. Additionally, this article attempts to review some of the peculiar and specific features and regularities of apoptosis in plants.

MORPHOLOGICAL HALLMARKS OF PCD

The morphological features of PCD have been intensively studied in animals. PCD in animal systems is reported to result in the disassembly of cells involving the condensation, shrinkage and fragmentation of cytoplasm and nuclei into several sealed packets (often called apoptotic bodies), which are then phagocytosed, by the neighboring cells or the macrophages. Thus, there are no remnants of the cell corpses left. Nuclear fragmentation is preceded by chromatin condensation and marginalization in the nucleus. Fragmentation of DNA at the nucleosome linker sites then takes place and the fragmented oligonucleosomal bits are reported to be 180 bp (Danon and Gallois, 1998). Fragmentation is effected by endonucleases such as NUC 1, DNaseI and DNaseII (Peitsch et al., 1993), which are present in the nucleus and are activated by Ca^{2+} and Mg^{2+} but inhibited by Zn^{2+} and by several caspase activated nucleases such as CAD (Caspase activated DNase) or DFF40 (DNA fragmentation factor 40KDa) (Enari et al., 1998; Halenbeck et al., 1998; Liu et al., 1998). The DNA fragments can be cytochemically determined by Terminal deoxynucleotidyl transferase mediated dUTP Nick End Labelling (TUNEL) of DNA at 3'-OH group. When all these events are combined to result in a distinct morphological expression then PCD is termed as apoptosis (Cohen 1993). In other words, apoptosis is a distinct form of PCD (D'Silva et al., 1998; Danon and Gallois, 1998). However there are others who consider apoptosis and PCD as one and the same (White, 1996; Miller and Marx, 1998; Hengartner, 1998; Chinnaiyan and Dixit, 1996).

In the last few years and due to new interest in a possible apoptosis like phenomenon existing in plants, morphological changes have been investigated during plant PCD. Only some of the hallmarks are similar to those reported in animal apoptosis. Condensation & shrinkage of the cytoplasm and nucleus have been described in carrot cell culture, after cell death induced by heat shock (McCabe et al., 1997). The DNA processing reported earlier for the animal PCD is believed to exist in the dying cells of plant as well (Wang et al., 1996a; Wang et al., 1996b; McCabe et al., 1998; Orzaez and Granell, 1997a). In plants, DNA ladders have been reported during development represented by death of monocot aleurone layer (Wang et al., 1996a) and endosperm (Young et al., 1997), senescence of petal, carpel tissue and leaves (Orzaez et al., 1997a; Orzaez et al. 1997b; Yen et al., 1998) or during anther development (Wang et al., 1999) as well as during death induced by different stresses such as: cold (Koukalova et al., 1997), nutrient deprivation (Callard et al., 1996), salt or D-mannose stresses (Katsuhara et al., 1997; Stein et al., 1999), UV radiation (Danon et al., 1998), pathogens or a pathogen toxin (Navarre et al., 1999; Ryerson et al., 1996; Wang et al., 1996b). In aleuronic cells of grass species such as barley, in dying root cap cells and in tobacco cells subjected to HR, nuclear condensation and shrinkage as well as oligonucleosome sized DNA fragment

*Corresponding author. E-mail: dr.yanjay6@mail.ru

have been recognized through the presence of 3'-OH group detected by TUNEL experiments (Pennell and Lamb, 1997; Mittler and Lam, 1997). Although in case of animals, one of the major hallmarks of PCD is the fragmentation of DNA at the nucleosome linker sites into oligonucleosomal bits of precisely 180 bp, the major problem relating to nuclear changes in plant PCD is that there is no consistency regarding the size of DNA fragments during DNA fragmentation: fragments of more or less 50Kb in some cases (Mittler and Lam, 1997) and as small as 0.14 Kb in others (Cohen, 1993; O'Brien et al., 1998). It is believed that the activation of some endonucleases leads to 50 Kb DNA fragments followed latter by a different set of endonucleases causing the production of oligonucleosomal length of DNA fragments (Pandey et al., 1994). The first type of cleavage is believed to be the result of the release of chromatin loops and is observed in almost all cases of apoptosis and the subsequent nucleosomal laddering occurs less often and is considered to be not essential for apoptosis (Oberhammer et al., 1993).

The enzymes involved in nuclear dismantling in plants are still poorly known. Several DNase activities and nuclease genes have been recognized to be up regulated in different models of plant PCD (Sugiyama et al., 2004). However, molecular and biochemical evidences on their involvement in the cell death has been reported only in some of them. Recent work reported the induction of the activity of a 28 kDa endonuclease (p28) activity in victorin (Tada et al., 2001) treated oat leaves and this preceded the DNA laddering and heterochromatin condensation. The p28 activity also markedly increased in parallel with the rate of DNA fragmentation and cell death (Tada et al. 2001). In addition to p28, an inducible nuclease, p24 (24 kDa) and four constitutive nucleases, p22 (22 kDa), p31 (31 kDa), p33 (33 kDa) and p35 (35 kDa), have been detected in oat cell lysates using an in-gel assay for nuclease activity (Tada et al., 2001; Kusaka et al., 2004). A Mg^{2+} dependent nucleolytic activity has been identified in the intermembrane space of mitochondria responsible for the generation of 30Kb DNA fragments in Arabidopsis (Ito and Fukuda, 2002). ZEN1, a Zn^{2+} dependent endonuclease, has been directly implicated in the degradation of the nuclear DNA in Zinnia tracheary elements (Ito and Fukuda 2002). ZEN1 is localized to vacuoles, which collapse before DNA is degraded (Obara et al., 2001). However, ZEN1 activity does not produce the characteristic DNA laddering shown by the nucleases executing DNA fragmentation in apoptotic animal cells (Enari et al., 1998; Halenbeck et al., 1998; Liu et al., 1998). Based on the biochemical differences of ZEN1 and the nucleases involved in animal apoptosis, it has been proposed that plants and animals have evolved independent systems of nuclear DNA degradation during cell death. In contrast with tracheary elements, the tissues undergoing PCD in cereal grains show the characteristic DNA laddering indicative of inter-nucleosomal fragmentation of DNA

(Domínguez et al., 2001; Young and Gallie, 1999; Young and Gallie, 2000; Domínguez et al., 2004; Wang et al., 1996a), which is a hallmark of apoptosis in animal cells (Earnshaw, 1995). Recently, a Ca^{2+}/Mg^{2+} endonuclease localized in the nucleus wheat aleuron cells undergoing PCD has been identified which is detected prior to DNA laddering (Domínguez et al., 2004). A cell-free system used to analyze nucleus degeneration in nucellar cells in wheat grains (Domínguez and Cejudo, 2006), shows that a different wheat tissue, the nucellus, which undergoes PCD at early stage of grain development (Domínguez et al., 2001), presents a nucleus localized nuclease with identical cation requirements, but with a different electrophoretic mobility than the aleuron nuclease. These results suggest that both animal apoptosis (Samejima et al., 2005) and plant PCD involves more than one nuclease. Nuclear extracts from such cells have been shown to be capable of triggering DNA fragmentation in both plant and human nuclei, demonstrating that similar features of nucleus degradation could be shared between plant and animal cells.

Apoptotic bodies have not been shown to form during plant cell death. These bodies may be absent in plant PCD because they are functionally irrelevant due to the absence of possible phagocytosis by adjacent cells in the presence of cell wall. Instead, the plant pathway might involve autolysis. Although cells that die as part of the HR typically exhibit features of an oncotic cell death, which is characterized by the retention of a dead protoplast containing swollen organelles (Jones, 2000), many other plant cell suicide programs include cellular disassembly via autophagy and/or autolysis. The degree of processing of dead and dying cells ranges from that apparently limited to nucleus or nuclear DNA to complete autolysis that includes the extracellular matrix. Degradation of nucleus and nuclear DNA has been evaluated in several recent investigations of plant PCD. The results are consistent with earlier work in a variety of systems. They include reports of nuclear blebbing and fragmentation (Schussler and Longstreth, 2000; Yamada et al., 2000; Filonova et al., 2000), and the detection of oligosomal DNA ladders (Xu and Hanson 2000; Yamada et al., 2000; Filonova et al., 2000; Delorme et al., 2000) and labelled fragmented DNA in nucleus (Jordan et al., 2000; De Jong et al., 2000; Yamada et al., 2000; Filonova et al., 2000; Simeonova et al., 2000).

Autophagy has been observed as engulfment and degradation of nucleus and other organelles by provacuoles, vacuoles and other autophagic organelles derived from leucoplast (Filonova et al., 2000). Autolysis does not require engulfment and contributes to the degradation of organelles and soluble cellular components. Unlike autophagy, autolysis can continue after cell death, as occurs during treachery element differentiation. In most cases, autolysis and autophagic mechanisms cooperate to yield cellular disassembly, such as that occurring during embryo suspensor death (Filonova et al., 2000). So if

using a strict morphological definition, the term apoptosis-like phenomenon in plants should be used instead of apoptosis since some of the terminal hallmarks of apoptosis are absent.

Basic executors of PCD

The real effector molecules of animal PCD are the cysteine-specific proteases (caspases) and granule enzymes. The former are the conserved cysteine proteases, while the latter are serine proteases, both specifically cleave after the aspartate residues of many proteins. The studies in *Caenorhabditis elegans* (*C. elegans*) identified two genes *ced-3* and *ced-4* required for apoptosis in the worm, if either gene is inactivated by mutation, the 131 cell deaths that normally happen during the development of the worm (which has only about 1000 cells when mature) fail to occur (Ellis et al., 1991). Remarkably, the mutant worms with 131 extra cells have a normal life span, showing that in this organism apoptosis is not essential for either life or normal ageing. By contrast, more complex animals cannot survive without apoptosis: mutations that inhibit apoptosis in the fruit fly *Drosophila melanogaster*, for example, are lethal early in development (White et al., 1994) as are mutations in mice that inhibit apoptosis mainly in the developing brain (Kuida et al., 1996). The protein encoded by the *ced-3* gene was found to be very similar to a human protein called interleukin-1-converting enzyme (ICE) (Yuan et al., 1993). ICE is an intracellular protein cleaving enzyme (a protease) that cuts out interleukin-1, a signalling protein that induces inflammation, from a larger precursor protein (Nicholson, and Thornberry, 1997). The similarity between the CED-3 and ICE proteins was the first indication that the death programme depends on protein cleavage (proteolysis). Till date 14 to 15 different caspases that play a role in inflammation (group 1 caspases) and apoptosis (group 2 caspases) have been identified in animals (Rudel, 1999). All these are believed to share a fair level of sequence homology and similarity in sequence specificity (Rudel, 1999; Nicholson and Thornberry, 1997; Thornberry and Lazebnik, 1998). Up till now, the caspase family in animals is composed of 12 different proteases classified in 3 phylogenetic groups [Interleukin 1 converting Enzyme (ICE), ICH1 and cysteine protease 32 (CPP32)]. All these caspases have in common a highly conserved catalytic site, a stringent substrate specificity to cleave after an aspartic acid residue and requirement for at least 4 amino acids N terminal to cleavage site (Garcia-Calvo, 1998). It is possible to classify these caspases on the basis of their affinity for different substrates including two tetrapeptides in particular: DEVD (ICH1 and CPP32) and YVAD (ICE caspases). Corresponding caspase activity can be blocked with same peptide substrate coupled with aldehyde (CHO: reversible inhibitor) or methyl ketone radical [Chloromethylketone (CMK), fluoromethylketone (FMK): irreversible inhibitor].

Caspases are made as a large, inactive precursor (procaspase), which is itself activated by cleavage at aspartic acids, usually by another caspase (de Murcia et al., 1994; Figure 1). In apoptosis, caspases are thought to be activated in an amplifying proteolytic cascade, cleaving one another in sequence. Once activated, the effector caspases ultimately cleave numerous substrates, thereby causing the typical morphological features of apoptosis (Kumar, 2007; Timmer and Salvesen, 2007). They cleave proteins supporting the nuclear membrane (lamins) for example, thereby helping to dismantle the nucleus; they cleave protein constituents of the cell skeleton and other proteins involved in the attachment of the cell to their neighbors, thereby helping the dying cell to detach and round up making it easy to ingest; they cleave a protein Inhibitor of Caspase Activated DNase (ICAD of CAD-ICAD complex) that normally holds the CAD- a DNA degrading enzyme in an inactive form, freeing the DNase to cut up the DNA in the cell nucleus (Enari 1998). The other important substrates include PARP [poly(ADP-ribose)polymerase], DNA dependent protein kinase (DNA PK), Serum response element binding protein (SRE/BP), p21(CDKN1A)-activated kinase 2 (PAK2), 70KDa components of U1Sn-RNP, procaspases and so on (Rudel, 1999). PARP is among the first target proteins shown to be specifically cleaved by caspases to a signature of 89 KDa apoptotic fragments during cell death (Lazebnik et al., 1994). It is believed to be involved in the regulation of the repair of DNA strand breaks and in cell recovery from DNA damage (de Murcia et al., 1994).

Cell death in plants exhibits morphological features comparable to caspase mediated apoptosis in animals, suggesting that plant cell death is executed by (Caspase like) proteases. The recent characterization of cell death associated plant proteases with aspartate specific cleavage activity demonstrates the involvement in plant PCD of proteolytic activities functionally resembling animal caspases. The result of a study carried out show induction of YVADase activity whereas no DEVDase activity was detected (del Pozo and Lam, 1998). Surprisingly, both inhibitor peptides (DEVD and YVAD) were efficient in blocking the HR and YVADase activity. Encouragingly, none of the classical protease activity could suppress the hypersensitive response or YVADase activity. This is cited as an evidence for the presence of caspase like plant proteases that participate in hypersensitive response cell death. Different results were found during the plant response to UV-C radiation where both caspase inhibitors could prevent DNA digestion detected by TUNEL reaction and where UV-C induced DEVDase activity but no YVADase activity was found. Danon et al. (2004) and Lincoln et al. (2002) reported that the heterologous expression of Baculovirus p35 protein, a broad range caspase inhibitor that can effectively suppress PCD in animals, blocked AAL (*Arternaria alternata*) toxin induced cell death in transgenic tomato plants and provided protection against the pathogen *Arternaria alter-*

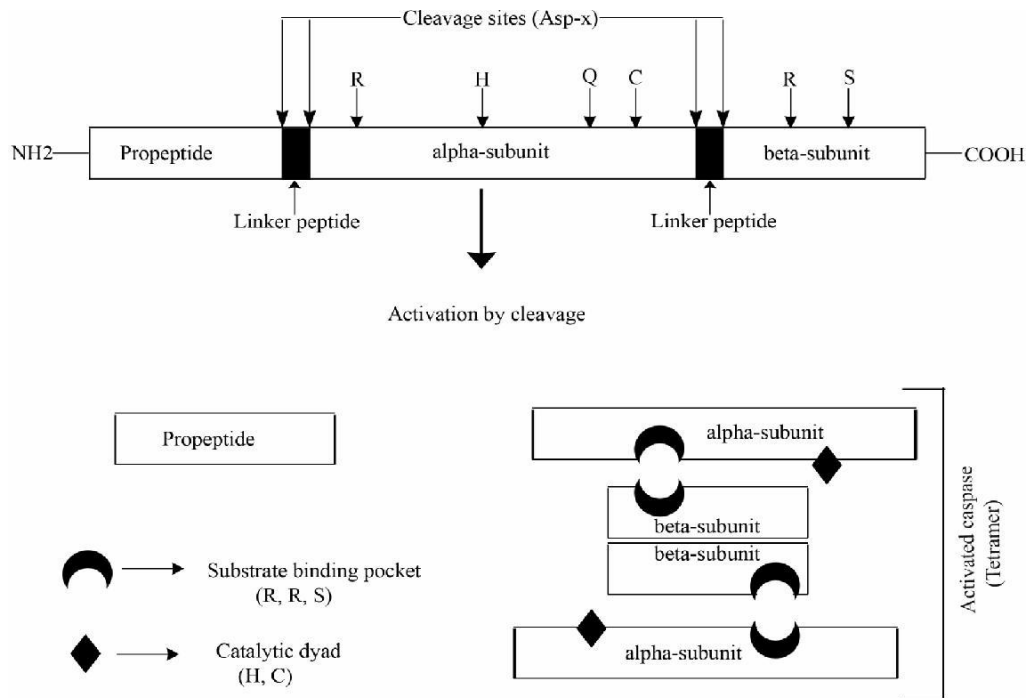


Figure1. Diagrammatic representation of the activation of human caspase 1: Caspases are activated by proteolytically removing the propeptide and the linker peptides from the inactive caspase and cleaving the rest of the caspase into larger -subunit and smaller -subunit. These subunits assemble into active tetramer containing two active sites (Nicholson, 1999; Grutter, 2000)

nate. Additionally, p35-expressing transgenic tomato plants displayed partial inhibition of cell death associated with non-host hypersensitive response cell death upon bacteria and virus challenge (Del Pozo and Lam, 2003). Because p35 shows a high degree of specificity towards caspases and it shows a little or no inhibitory activity towards other proteases, these physiological inhibitor studies support an important role for caspase like proteases during cell death in plants (Del Pozo and Lam, 2003). In addition, natural caspase substrates such as bovine and plant PARP are cleaved by plant proteases at caspase cleavage sites. Exogenous (bovine) PARP is endoproteolytically cleaved by extracts from fungus-infected cowpea (*Vigna unguiculata*) plants that were developing a HR but not by extracts from noninfected leaves. This cleavage activity inhibited by caspase-3 inhibitor (Acetyl-DEVD-CHO) but not by caspase-1 inhibitor (Acetyl-YVAD-CHO) (D'Silva et al., 1998). Interestingly, a polypeptide (GDEVGDIDEV) mimicking the PARP caspase-3 cleavage site (DEVD-G) partially inhibited PARP cleavage, whereas a modified peptide in which the essential Asp was replaced by Ala (GDEVAGIDEV) did not affect PARP cleavage. This cleavage activity was also inhibited by other Cys protease inhibitors (E-64, IA, and N-ethylmaleimide). Inhibitors to other types of proteases (Ser-, metallo-, Asp proteases, and calpain) were without effect in this system. In these experiments, PARP cleavage eventually yielded four different fragments of

77, 52, 47, and 45 kD (D'Silva et al., 1998). Cleavage of endogenous (plant) PARP (116 kDa) reacting with a PARP antibody occur during menadione-induced PCD in tobacco protoplasts, and this cleavage of PARP and induction of DNA fragmentation has been shown to be inhibited by caspase-1 (Acetyl-YVAD-CHO) and caspase-3 (Acetyl-DEVD-CHO) inhibitors (Sun et al., 1999). Also in heat shock induced PCD in tobacco suspension cells, endogenous PARP was cleaved, yielding a 89 kDa fragment (Tian et al., 2000). This is similar to the cleavage of PARP described in animal apoptotic cells. In both mammals and plants, two different types of PARP exist, and both types are presumably involved in DNA repair. The Arabidopsis PARP-1 shows high homology to human PARP-1 including a conserved caspase-3 recognition site (DSVD-N). In plants, PARP genes have been cloned from *Zea mays* and *Arabidopsis thaliana* and PARP activity has been identified in few species (O'Farrell, 1995).

Although there have been numerous efforts to identify proteinases that exhibit caspase activities, plant caspases have remained unidentified (Woltering et al., 2002). Recent work, however, has unraveled this mystery. Vacuolar processing enzyme (VPE) has been shown to be a protease that exhibits caspase-1 activity and is essential for virus-induced hypersensitive cell death (Hatsugai et al., 2004). Direct evidence has been reported for the involvement of VPEs in plant cell death (Sanmartin et al., 2005; Hatsugai et al., 2004; Hatsugai et al., 2006; Kuro-

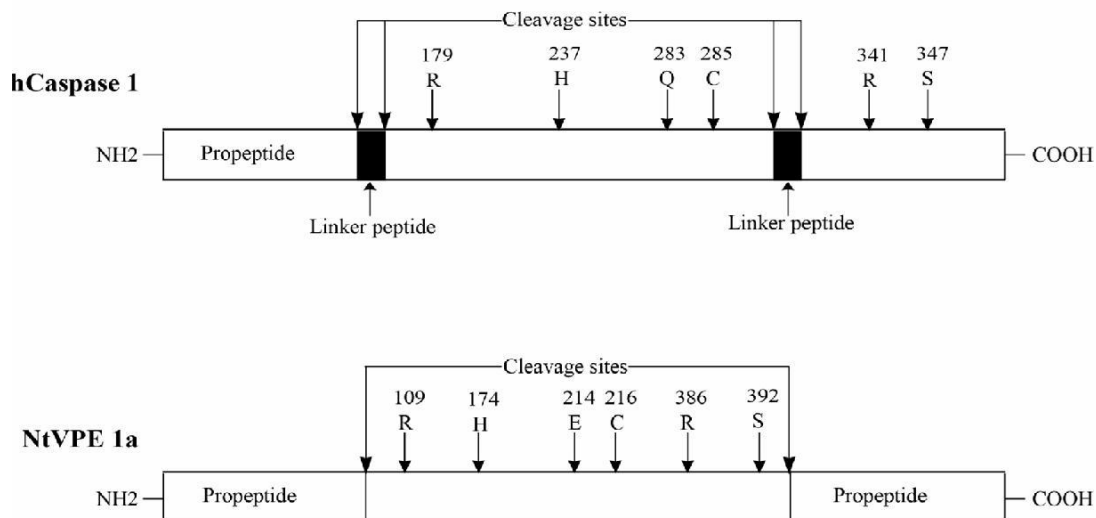


Figure 2. Schematic representation of active site residues among the human caspase1 (hCaspase1) and *Nicotiana tabacum* VPE (NtVPE1a). Histidine 237 and Cysteine 285 that are involved in catalysis in hcaspase1 correspond to H174 and C216 of NtVPE1a and Arginine 179, Arginine 341, Serine 347 involved in substrate binding in hcaspase1 correspond to R109, R386 and S392 in case of NtVPE1a. Caspase1 and plant VPEs are activated by proteolytically removing the propeptides and the linker peptides from the inactive caspases which is then converted into active caspase.

yanagi et al., 2005; Hara-Nishimura et al., 2005; Lam, 2005). Hara-Nishimura and coworkers (Hatsugai et al., 2004) have used a temperature sensitive N-TMV tobacco plant pathogen system to identify the proteases responsible for caspase like activity. The temperature-sensitive N-TMV (tobacco mosaic virus) tobacco plant-pathogen system allows massive cell death to be synchronized. At 30°C, TMV can systemically infect tobacco plants because induction of cell death and defence gene expression is completely suppressed. Upon shifting the temperature to 23°C, cell death appears throughout the infected plant. A biotinylated caspase inhibitor (biotin-XVAD-FMK) was used to identify the proteins complexing with this inhibitor. The inhibitor when infiltrated into tobacco leaves before temperature shift, effectively blocked cell death and specifically bound to protein fractions of 40 and 38 KDa. Using antibodies against the intermediate and mature forms of VPE these fractions were recognized as two forms of VPE, indicating that the caspase like activity was performed by VPE. Infiltration of leaves with YVAD-CHO as well as specific VPE inhibitor (ESEN-CHO) abolished lesion formation. In addition, in VPE silenced plants hypersensitive cell death response to TMV was greatly suppressed. These results clearly demonstrate the caspase like activity of VPE and its involvement in TMV induced cell death. Cell death is accompanied by an increase in YVADase activity but not by DEVDase activity (Lam and Del Pozo, 2000). This suggests the involvement of VPEs in cell death and shows that VPEs are among the targets of caspase inhibitors in plants. *Arabidopsis* has four VPE genes (VPE, VPE, VPE, VPE) which are separated into seed type and vegetative

type (Yamada et al. 2005; Nakaune et al., 2005; Kinoshita et al., 1995). VPE is an asparaginyl endopeptidase (Hara-Nishimura et al., 1998; Hara-Nishimura et al., 2003). It cleaves peptide bonds on the C-terminal side of Asparagine residues exposed on molecular surface of proprotein precursors to generate the respective mature proteins (Hara-Nishimura et al., 1991; Hara-Nishimura et al., 1987; Hara-Nishimura et al., 1993). However, it also has been shown that VPE cleaves peptide bonds on the C-terminal side of aspartic acid residues (Becker et al., 1995; Hiraiwa et al., 1999). VPE recognizes aspartic acid when it is part of the YVAD sequence of a caspase-1 substrate, but does not necessarily recognize other aspartic acid residues (Hatsugai et al., 2004), similar to caspase-1 (Stennicke et al., 1998; Earnshaw et al., 1999). VPE, like caspases, is a cysteine protease. Although VPE is not related to the caspase family or the metacaspase family, VPE and caspase-1 share several enzymatic properties (Figure 2). Two residues of the catalytic dyad in VPE (histidine and cysteine; Figure 2) (Hiraiwa et al., 1999) are comparable to His237 and Cys285 of the catalytic dyad in human caspase-1 (Nicholson, 1999; Cohen, 1997). The QACRG pentapeptide of the active site of caspase-1 is similar to the E(A/G)CES pentapeptide of the active site of VPEs. A similar comparison was also done for human caspase-8 and *Arabidopsis* VPE (Sanmatin et al., 2005). In addition, each of three essential amino acids, Arg179, Arg341 and Ser347, which form the substrate-binding pocket of caspase-1 (Wilson et al., 1994; Nicholson 1999) are conserved in VPEs. This is the case for all of the more than 20 VPEs that are currently in databases. The sub-

strate binding pocket of VPE might be similar to the substrate-binding pocket of caspase-1. Both VPE (Hiraiwa et al., 1997; Hiraiwa et al., 1999; Kuroyanagi et al., 2002) and caspase-1 (Cohen, 1997) are subjected to self-catalytic conversion / activation from their inactive precursors.

With the sequencing of the complete genome of the model plant *A. thaliana* (Arabidopsis Genome Initiative, 2000), these caspase like activities have steered an intensive but frustrating search for caspase genes within plants. At the end of 2000, distant caspase relatives were discovered in silico in plants, the metacaspases that contain some of the structural features that are characteristic of the animal caspases (Uren et al., 2000; Vercammen et al., 2004). The Arabidopsis thaliana genome contains nine metacaspases. The function(s) and substrate specificity of the metacaspases from plants have not yet been investigated. The increased expression of one of the tomato metacaspases during infection with the necrotrophic pathogen *Botrytis cinerea* suggests a possible role for plant metacaspases in cell death (Hoeberichts et al., 2003). The recent findings by Peter Bozhkov and colleagues (Bozhkov et al., 2004) also indicate that a plant metacaspase might be involved in cell death. These authors studied proteolytic activity during embryogenesis in Norway spruce (*Picea abies*). Concomitant with massive cell death during shape remodelling, an increase in VEIDase activity (equivalent to activity of human caspase-6) was observed. Treatment with VEIDase inhibitor VEID-fluoromethylketone (VEID-FMK) inhibited cell death and prevented normal embryo development. The authors used a range of other caspase substrates but, apart from IETD- 7-amino-4-methyl-coumarin, these were cleaved poorly. The VEIDase activity was sensitive to pH, ionic strength and Zn^{2+} comparable to human caspase-6. The substrate specificity of the Norway spruce VEIDase appears similar to that of the yeast metacaspase YCA1 (Madeo et al., 2002), suggesting that the plant VEIDase involved in cell death is a metacaspase. This group also showed that silencing of a metacaspase gene (EMBL database Accession no. AJ534970) reduced VEIDase activity and cell death, and inhibited embryonic pattern formation (Suarez et al., 2004). These findings suggested that plant metacaspases were among the targets of the human caspase inhibitors and perhaps metacaspases functionally resemble animal caspases. But later *in vitro* experiments have shown that *mclI-Pa* (type II metacaspase gene) had Arg but not Asp specificity (Bozhkov et al. 2005). Because knocking down *mclI-Pa* not only disrupted cell death but also blocked embryonic differentiation, it was speculated that *mclI-Pa* might be primarily involved in cellular differentiation rather than in cell death. Possibly, *mclI-Pa* regulates the actin reorganization observed during cellular differentiation (Smertenko et al., 2003), like mammalian caspases do in the cytoskeletal rearrangements during apoptosis (Mashima et al., 1999). In *Arabidopsis*, mere constitutive

over expression or disruption of meta-caspase genes does not lead to an obvious phenotype (Vercammen et al., 2006; Belenghi et al., 2007) and, thus, a role for metacaspases in cell death or other processes has not been identified yet. Redundancy may exist between the various members of this family, or additional factors may be necessary to activate ectopically expressed metacaspases.

The proteins responsible for the activation of the executors of PCD: The adaptors

The controlled activation of caspase precursors (Zymogens) is achieved by adaptor proteins that bind to them through shared motifs. Tumour Necrosis Factor (TNF) receptors superfamily or apoptogenic cofactors released by the mitochondria can be mentioned as examples of adaptors. Caspases-8 is activated when death effector domains (DEDs) in its pro domain bind to the C-terminal DED in adaptor molecule Fas-associated death domain (FADD); similarly Caspase-9 is activated after the association of Caspase Recruitment Domain (CARD) in its prodomain with the CARD in another cofactor protein, Apoptosis Protease Activating Factor-1 (APAF-1) (Vaux et al. 1999; Thornberry et al. 1998). In the worm *Caenorhabditis elegans*, Ced-4 acts as the adaptor molecule.

Database searches have identified several motifs of similarities between Ced-4, APAF-1 and proteins encoded by resistance genes regulating HR in plants. The conserved domain has been coined as NB-ARC (Van der Biezen and Jones, 1998; Rojo et al., 2004).

Intracellular controls: The regulators

A decision to die should not be taken lightly and so it is not surprising that the death programme is regulated in complex ways. A major class of intracellular regulators is the B-cell leukemia/lymphoma 2 (Bcl-2) family of proteins, which like caspase family, has been conserved in evolution from Worms to humans (Adams and Cory 1998). *ced-9* (*ced* for cell death abnormal) gene in *C. elegans* encodes such a protein: if it is inactivated, most of the cells in the developing worm die and worm, therefore, dies early in development, but if *ced-4* is also inactivated so that apoptosis cannot occur, the worm and all of the cells live (Kerr et al., 1972). Ced-9 prevents caspase activation by binding to adaptor Ced-4 (Vaux and Korsmeyer, 1999) in the worms. So, it seems that the only reason any cells in the developing worm live is that *ced-9* normally keeps the death programme suppressed in these cells. *ced-9* gene is similar to the humans *bcl-2* gene. Fifteen *bcl-2* family members have been identified so far in the mammals. Some such as Bcl-2, Bcl-XL, Bcl-W etc. suppress apoptosis (anti apoptotic): others such as BCL2 associated x protein (Bax), BCL2 antagonist/killer (Bak), BCL2-related ovarian killer (Bok), BCLxL/BCL2 associated death promoter (Bad) and BH3

interacting domain death agonist (Bid) promote it (proapoptotic) (Adams and Cory, 1998). Some of these proteins can bind to each other: when an apoptosis suppressor forms a complex with an apoptosis promoters, each protein inhibits the others function. The ratio of suppressor to promoters help determine a cell's susceptibility to apoptosis (Merry and Korsmeyer, 1997).

It is now an established fact that mitochondria which are called the powerhouses of the cell, not only generate energy for cellular activities but also play an important role in cell death (Green et al., 1998; Shah et al., 2000) in animals. They release several death promoting factors such as cytochrome C (Cyt-C) (which contribute to cas-pase activation), Apaf- 1, Apoptosis inducing Factor (AIF), procaspase- 3, Ca^{2+} & reactive oxygen species (ROS) in response to various stimuli. Different mechanisms have been suggested to explain the release of apoptogenic factors from mitochondria, induced by pro- apoptotic proteins (Bernardi et al., 2001; Kroemer and Reed, 2000). The first involves Bax that could simply oligo-merise in outer mitochondrial membrane (OMM) to form a channel. Alternatively, Bax, in association with either the voltage-dependent anion channel (VDAC) or truncated Bid (tBid), could promote the formation of pores allowing the passage of soluble proteins. Alternative models have been suggested in which, during early stages of apoptosis, the inner mitochondrial membrane (IMM) plays a key role. The first one implies that water and solutes enter the mitochondrial matrix, inducing swelling of mitochondria (Bernardi et al., 2001; Kroemer and Reed, 2000). This process is mediated by either VDAC or the opening of a permeability transition pore (PTP) (Desagher and Martinou, 2000). The PTP may be defined as a voltage-dependent, cyclosporin A (CsA)-sensitive, high conductance inner membrane channel. The molecular structure of PTP is still unknown, although evidence suggests that it may be formed of several components, including matrix cyclophilin D, the outer membrane VDAC, the inner membrane adenine nucleotide translocase (ANT), peripheral benzodiazepin receptor and Bcl-2, hexokinase bound to VDAC, and intermembrane creatine kinase (Bernardi, 1999; Zoratti and Szabo, 1995). Recent evidence indicates that the mitochondria-associated hexokinase plays an important role in the control of apoptosis in mammals (Downward, 2003; Birnbaum, 2004; Majewski et al., 2004). Hexokinase is an integral component of the PTP through its interaction with porin or the voltage-dependent anion channel (VDAC) (Wilson, 2003), and hexokinase binding to the VDAC interferes with the opening of the PTP, thereby inhibiting cytochrome c release and apoptosis (Pastorino et al., 2002; Azoulay-Zohar et al., 2004). Thus, detachment of hexokinase from the mitochondria potentiates, and its over expression inhibits mitochondrial dysfunction and cell death induced by various stimuli (Gottlob et al., 2001; Bryson et al., 2002; Majewski et al., 2004). Recent studies have shown that cyclophilin D, another compo-

nent of the PTP, is a key factor in the regulation of PTP function and that cyclophilin D-dependent mitochondrial permeability transitions are required to mediate some forms of necrotic cell death but not apoptotic cell death (Baines et al. 2005; Nakagawa et al., 2005). However, these observations do not exclude the possibility that certain forms of apoptosis are mediated by the mitochondrial permeability transitions, because some forms of apoptosis are significantly inhibited by cyclosporin A, a specific inhibitor of cyclophilin activity (Green and Kroemer, 2004). Additionally, cyclophilin D-overexpressing mice exhibited an increase in apoptotic heart muscle (Sanjay et al. 2005) (Baines et al. 2005). Furthermore, in cancer cells, cyclophilin D over expression suppresses apoptosis via the stabilization of hexokinase II binding to the mitochondria (Machida et al., 2006). The pore open-closed transitions are highly regulated by multiple effectors at discrete sites. Factors affecting PTP can be subdivided into matrix and membrane effectors. The former include both openers (Ca^{2+} , phosphate, oxidizing agents, OH^- and atractylate) and inhibitors [CyclosporinA (CsA)], Adenosine diphosphate H^+ , bongkrekate and reducing agents]. Among the latter, a high (inside-negative) membrane potential tends to stabilize the PTP in a closed conformation, whereas depolarisation by different uncouplers determines its aperture. PTP is also regulated by quinones, which prevent Ca^{2+} -dependent pore opening. In addition, the Pore is regulated by Bcl-2 proteins & intracellular ATP levels (Green and Reed, 1998; Adams and Cory, 1998). The Bcl-2 proteins are membrane spanning and have at least one of the four Bcl-2 homology (BH) domains. It is shown that the proapoptotic Bax interacts with VDAC & ANT & brings about a conformational alteration to form a megachannel leading to the release of Cyt-C (Martinou, 1999; Bernadi et al., 2001). The pore conductance of VDAC has been shown to increase in the presence of Bax in artificial membranes and this increase is blocked by Bcl-XL (Shimizu et al., 2000). Bax and Bim interact with VDAC and lead to the release of Cyt-C, whereas Bcl-XL blocks this release (Shimizu et al., 1999; Sugiyama et al., 2002). The permeabilization of the IMM to solutes with molecular mass up to 1.5 kDa, caused by the aperture of the PTP results in the complete dissipation of mitochondrial electrical potential. Consequently, the high concentration of solutes present in the matrix induces an osmotic swelling that could ultimately lead to OMM rupture and the consequent release of proteins from the intermembrane mitochondrial space (IMS) (Kroemer and Reed, 2000).

Cyt-C, the most investigated protein involved in caspase activation, binds the scaffolding protein, named apoptotic protease activating factor-1 (Apaf-1), leading to an ATP- or dATP-dependent conformational change that induces Apaf-1 oligomerisation (van Gurp et al., 2003). This high molecular mass complex, called the apoptosome, is assembled by binding Cyt-C and Apaf-1 with procaspase-9 through the interaction between their cas-

pase recruitment domains (CARDs). Procaspase-9 activity is greatly enhanced in the apoptosome that, in turn, proteolytically activates caspase-3, finally resulting in the morphological and biochemical changes associated with apoptosis (Kaufmann and Hengartner 2001). The most common hallmark used to identify the involvement of plant mitochondria in PCD is the release of Cyt-C. The release of Cyt-C from mitochondria has been detected in different plant systems, in which PCD was induced. In particular, the release of Cyt-C precedes the appearance of PCD symptoms and has been recognized in *A. thaliana* cells treated with mannose, where the effect is also associated to endonuclease activation (Stein and Hansen, 1999), and in maize cells infected by *Agrobacterium* sp. (Hansen, 2000). In addition, harpin (a bacterial proteinaceous elicitor)-induced HR in tobacco cells is associated with an alteration of mitochondrial functions (Xie and Chen, 2000). The initial steps of cell death are accompanied by an oxidative burst, depletion of ATP, collapse of the mitochondrial electrical potential and release of Cyt-C. A strong stimulation of the expression of the alternative oxidase (AOX) and small heat-shock proteins (HSPs) has also been described (Krause and Durner, 2004). Consistent with this, induction of PCD in *A. thaliana* cell cultures by ceramide, protoporphyrin IX and an elicitor of HR (AvrRpt2) leads to the dissipation of mitochondrial electrical potential followed by morphological changes and Cyt-C release (Yao et al., 2004). By analogy with animal mitochondria, several authors have correlated the detected release of Cyt-C to the activity of PTP, on the basis of the inhibitory effect exhibited by CsA (Balk and Leaver, 2001; Lin et al., 2005; Tiwari et al., 2002). This contention seems to be confirmed by the observation that Nitric Oxide-induced programmed death in *Citrus sinensis* cell cultures is also prevented by CsA (Saviani et al., 2002). Plant mitochondria have the main components probably involved at the contact sites of OMM and IMM, e.g. ANT, VDAC (Godbole et al., 2003) and cyclophilin (Yokota et al., 2004), Hexokinase (Kim et al., 2006). A functional genomic screen to assess the functions of various signaling genes in *Nicotiana benthamiana* revealed that a tobacco rattle virus (TRV)-based virus induced gene silencing (VIGS) of a hexokinase gene, Hxk1, induced the spontaneous formation of necrotic lesions in leaves (Kim et al., 2006). Hxk1 was associated with the mitochondria, and its expression was stimulated by various cell death-inducing stresses. VIGS of Hxk1 resulted in apoptotic cell death in leaves, indicating that depletion of mitochondrial hexokinases activated programmed cell death (PCD). Conversely, overexpression of the mitochondria-associated *Arabidopsis* hexokinases, HXK1 and HXK2, conferred enhanced resistance to oxidative stress-induced cell death. Finally, the exogenous addition of recombinant Hxk1, but not Hxk1DN, which lacks the membrane anchor, inhibited clotrimazole (CTZ)/H₂O₂-induced Cyt-C release from mitochondria. These results suggest a

direct link between plant hexokinases and the PCD process. In any case, the opening of this channel would determine the entry into mitochondria of osmotically active solutes and water. This would cause a mitochondrial swelling with the consequent rupture of the OMM and release of Cyt-C.

A further model refers to the non-swelling mechanism involving the OMM. In this mechanism a crucial role is performed by VDAC, which interacts with Bax, forming a pore through which Cyt-C is released (Lam et al. 2001). The first evidence derives from a study in which the overexpression of mammalian Bax gene in tobacco plants causes hypersensitive-like lesions and induces defence genes (Lacomme and Santa Cruz, 1999). Recent experimental findings seem to corroborate this mechanism, suggesting that VDAC can play a crucial role in PCD pathway being a conserved element in both plants and animals (Godbole et al., 2003; Swidzinski et al., 2004). In agreement, VDAC expression increases during HR, senescence and heat-induced PCD in *A. thaliana* cells (Lacomme and Roby, 1999; Swidzinski et al., 2004). This evidence indicates a putative dual role for VDAC, as a component of PTP or as a channel that interacts with Bax.

In animal cells, the significance of the release of Cyt-C is the subsequent assembly of the apoptosome complex that is followed by the activation of the executioner caspases. Although evidences are lacking for the formation of apoptosome in plant cells, sequence alignments have revealed significant similarities among regions of *C. elegans* cell death gene that encodes a protease activating factor (Ced-4), human Apaf-1 and several plant resistance genes. Although these resistance genes do not contain CARD but may be assumed to function as controlling adaptors in plant protein complexes which are activated during HR (Vander Biezen and Jones 1998). Thus, the subsequent fate of Cyt-C is still problematic, because the formation of the complex like the apoptosome, is largely speculative. If an apoptosome-like complex exists in plants, it may interact with caspase-like proteases (Metacaspases, VPE) by analogy with the system in animal cells. In addition, a further evidence supporting the mitochondrial involvement in plant PCD is provided by the reports of strong increase in HSP during harpin HR in *A. thaliana* cells (Krause and Durner, 2004). HSPs are considered to partially suppress apoptosis in animal cells, by preventing Cyt-C release and disrupting the apoptosome. Plant HSPs are considered to accomplish comparable effects (Hoeberichts and Woltering, 2002).

It has been demonstrated that Bax inhibitor1 (BI-1) protein inhibits Bax induced apoptosis in mammalian cells and when ectopically expressed in yeast (Xu and Reed 1998). BI-1 contains six or seven predicted trans-membrane domains. As an integrate membrane protein, the localization of BI-1 is found to be similar to Bcl-2 exhibiting a nuclear envelope and endoplasmic reticulum asso-

ciation pattern (Xu and Reed, 1998). Moreover BI-1 has been isolated as one of the candidate suppressors of TNF-related apoptosis inducing ligand (TRAIL), an apoptosis-inducing member of the Tumour Necrosis Factor (TNF) (Burns and El-Deiry, 2001). The fundamental features of PCD are believed to be conserved throughout metazoans and plants (Pennel and Lamb, 1997). In support of this, a study carried out on tobacco shows that the expression of Bax, which is a mammalian pro-apoptotic protein, triggered cell death in tobacco leaf (Lacomme and Santa Cruz, 1999). Moreover, over-production of animal cell death suppressors Bcl-XL and Ced-9 conferred enhanced resistance to UV-b and paraquat treatment and salt, cold and wound stresses in tobacco plants (Mitsuhara et al., 1999; Qiao et al., 2002). However, recent research demonstrated that homologous plant genes for cell death suppressors such as *bcl-2*, *Bcl-XL* from humans and *ced-9* from *C. elegans* are not found in *Arabidopsis* genome whose sequence has been presented as the first complete genomic sequence of higher plants (Lam et al., 2001). Recently, it has been reported that a gene encoding a homolog of Bax inhibitor (*BI-1*) from *Arabidopsis* inhibits mammalian Bax action *in planta* (Kawai-Yamada et al., 2001). This is the first report on the direct contribution to plant cell death of a plant originating gene that is a homolog of animal cell death related gene. An *Arabidopsis* homolog *AtBI-1* (*Arabidopsis* Bax inhibitor 1) was identified from the genome sequencing project. The identity level is 37.5% *AtBI-1* shares 41% amino acid identity with mammalian BI-1 (mBI-1). Plant homologs of *BI-1* gene for several plant species including *Oryza sativa* (*OsBI-1*), *A. thaliana* (*AtBI-1*) have been cloned and characterized to various extents (Bolbuc and Brisson, 2002; Bolduc et al., 2003; Eichmann et al., 2004; Huckelhoven et al., 2003; Kawai et al., 1999; Kawai-Yamada et al., 2004; Matsumara et al., 2003; Sacher et al., 2000). Ectopic overexpression of *OsBI-1* leads to the elimination of cell death caused by Bax protein in Budding yeast *S. cerevisiae* (Kawai et al., 1999). Intriguingly enough, however, when *AtBI-1* was transfected into the mammalian cell systems, it did not suppress Bax induced cell death in the human cells. In fact, *AtBI-1* induced cell death comparable to Bax (Yu et al., 2002). The possibility exists that *AtBI-1* might directly damage the mitochondrial structure causing Cyt-C release. However, co-transfection of the cells with both human BI-1 and *AtBI-1* crippled cell death, suggesting preferably a dominant-negative mechanism in which *AtBI-1* induced apoptosis is minimized by overexpressed mBI-1 (Yu et al., 2002). It may, thus, be speculated that *AtBI-1* competitively interacts with endogenous mBI-1 or BI-1 target protein, interfering with its function & thereby triggering cell death. In this regard, *in vitro* binding of BI-1 with Bcl-2 but not with Bax has been demonstrated (Xu and Reed, 1998). Thus, it remains unclear how BI-1 suppresses Bax's function given that yeast and plants contain no obvious Bcl-2 homologs (Lam et al., 2001).

Interestingly, down regulation of a tobacco BI-1 homolog using an antisense RNA approach resulted in accelerated cell death of tobacco BY-cells upon carbon starvation (Bolduc and Brisson 2002). Down regulation of rice BI-1 in cultured rice cells upon challenge with a fungal elicitor from *Megnaporthe grisea* was concomitant with the progression of cell death and, conversely, overexpressed rice BI-1 can improve cell survival against the elicitor (Matsumara et al., 2003). Another study found that decreased BI-1 expression correlated with chemical-induced resistance of barley to the infection of a biotrophic fungal pathogen powdery mildew (*Blumeria graminis*), and overexpression of barley BI-1 at a single-cell level induces hyper susceptibility and could reverse the fungal resistance that is conferred by the loss of MLO, a negative regulator of cell death and defense response in barley (Huckelhoven et al., 2003). Although these observations support the idea that BI-1 homologs of yeast and plants have an anti-PCD function, the physiological importance of BI-1 and the impact of its loss of function in plants are still unclear at the whole plant level as clear genetic evidence is absent. However, a study carried out more recently (Watanabe and Lam, 2006) identified and characterized two independent *Arabidopsis* mutants with T-DNA insertion in the *AtBI-1* gene. The phenotype of *atbi1-1* and *atbi1-2*, with a C-terminal missense mutation and a gene knockout, respectively, is indistinguishable from wild-type plants under normal growth conditions. However, these two mutants exhibit accelerated progression of cell death upon infiltration of leaf tissues with a PCD-inducing fungal toxin fumonisin B1 (FB1) and increased sensitivity to heat shock-induced cell death. Under these conditions, expression of *AtBI1* mRNA has been shown to be up-regulated in wild-type leaves prior to the activation of cell death, suggesting that increase of *AtBI1* expression is important for basal suppression of cell death progression. Over-expression of *AtBI-1* transgene in the two homo-zygous mutant backgrounds rescued the accelerated cell death phenotypes. Together, these results provide direct genetic evidence for a role of BI-1 as an attenuator for cell death progression triggered by both biotic and abiotic types of cell death signals in *Arabidopsis*. Plant homologs of the animal anti-apoptotic defender against Apoptotic Death 1 (*DAD1*) gene have been reported in the cells of *A. thaliana* (Gallois et al., 1997), pea (Orzaez and Granel, 1997b) and rice (Tanaka et al., 1997). *DAD 1* has been discovered in hamster cells where the corresponding mutant cell line dies via apoptosis (Kusaka et al. 2004). The suppressor function of this protein was further suggested in

C. elegans via its over expression protects some of the cells destined to die by apoptosis during development (Sugimoto et al., 1995). At least two *A. thaliana* homologues have been found and transformation of the mutant hamster cell line with one of them, demonstrates that the function of the protein is conserved between plants and

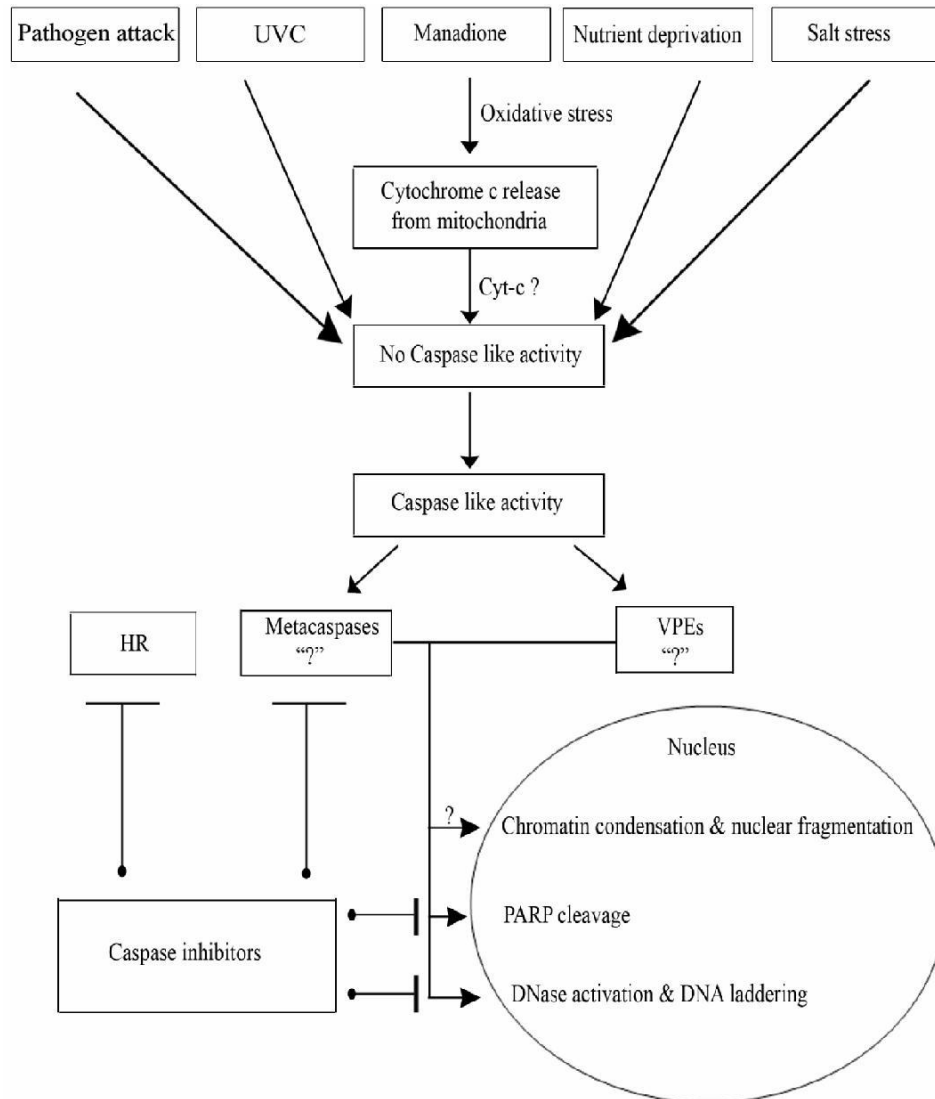


Figure 3. Chosen examples of treatments triggering different animal or plant PCD hallmarks in plant cell? Indicates events that have been shown in animals and have not been detected in plants and “?” Indicates arbitrary functional assignment in plants.

animals (Gallois et al., 1997). Other experiments have shown that DAD 1 is a subunit of mammalian Oligosaccharyl transferase complex (Kelleher et al., 1997). In mice, overexpression of DAD 1 does not have any protecting function against apoptosis but affects cell cycle (Hong et al., 1999). All these results together make the role of this gene in animal apoptosis unclear, whereas its putative suppressor role in plants is still not established.

CONCLUSIONS AND FUTURE PERSPECTIVES

There are likely to be inherent differences in the operational mechanism of PCD between plants and animals; there is also the possibility for the involvement of different operational mechanisms of PCD in different plant cell types, that is, more than one pathway of PCD is likely to

be operative in plants, while in animals there seems to be only one programme. No plant system is yet described which shows all features common to animal PCD. The comparison of plant PCD and apoptosis in animals show important differences regarding morphological changes occurring in the dying cells and enzymes involved in the process. However, the final execution of the process, DNA fragmentation and nuclear disorganization, has similarities in animal and plant cells, suggesting that it might have evolved from a common ancestor. Extensive studies have provided evidence that PCD in plants and animals share components that include caspase-like activity (Lam et al., 2001; Hatsugai et al., 2004; Suarez et al., 2004; Sanmartin et al., 2005; Kuroyanagi et al., 2005; Hara-Nishimura et al., 2005; Lam, 2005; Hatsugai et al., 2006) and these caspase-like activities could be inhibited

with caspase inhibitors but not caspase-unrelated protease inhibitors (del Pozo and Lam, 1998). Furthermore, the caspase inhibitors have been shown to abolish these PCDs (del Pozo and Lam, 1998; De jong et al., 2000). The existence of plant proteases that recognize and process the natural caspase substrate PARP apparently at caspase recognition site (Sun et al., 1999; Tian et al., 2000; O'Farrell, 1995) and the functionality of natural caspase substrates in plants (Danon et al., 2004 and Lincoln et al., 2002) substantiates the involvement of caspase like activity in plant programmed cell death (Figure 3)

VPEs and metacaspases appear to be the prime candidates that seem to be responsible for the caspase like activities observed. However, until now, the role of metacaspases in cell death still remained enigmatic, and both up- and down-regulation of metacaspases have yielded conflicting data. However, such approaches bear the risk that a constitutive perturbation of genes that are essential for normal cellular homeostasis leads to over-interpretation. Alternative routes toward unraveling the function of metacaspases could involve the identification of their substrates by using technologies that allow direct characterization of *in vivo* protein processing on a proteome-wide scale (Gevaert et al., 2006). Knowing the degradome specificity of metacaspases could reveal their role in cellular and developmental processes, including cell death. Overproduction of the cleavage fragments and/or of uncleavable mutant proteins would help elucidate the functional consequences of substrate cleavage by metacaspases. The many intriguing similarities with PCD in animals will need to be rigorously tested to demonstrate that they are conserved, and are derived from a common ancestral origin. In spite of significant progress in our understanding of plant PCD in recent years, its control mechanism remains unclear. Deployment of reverse genetic approaches such as PTGS/RNAi strategies (Wang and Waterhouse, 2002) and knockout screens using T-DNA or transposon insertion collections (Bouche and Bouchez, 2001), coupled with global expression approaches such as micro-array analysis should help speed up the first essential step of identifying the important players involved in plant cell death activation. This approach would be complementary to forward genetic approaches that are revealing new regulator(s) that may not have counterparts in other organisms.

ACKNOWLEDGEMENTS

Fellowship grant to Nishawar Jan [F.No.10-2(5)/2003(II).E.U.II] from University Grants Commission, India is Gratefully acknowledged. The authors also wish to thank Dr. Riyaz .A. Pandit for his help with graphics.

REFERENCES

Adams JM, Cory S (1998). Bcl-2 protein family: the arbiters of cell survival. *Sci.* 281:1322–1326.

- Ameisen JC (2002). On the origin, evolution & nature of programmed Cell Death: a timeline of four billion years. *Cell. Death. Differ.* 9: 367–393.
- Azoulay-Zohar H, Israelson A, Abu-Hamad S, Shoshan-Barmatz, V (2004). In self-defence: Hexokinase promotes voltage dependent anion channel closure and prevents mitochondria-mediated apoptotic cell death. *Biochem. J.* 377: 347–355.
- Baines CP, Kaiser RA, Purcell NH, Blair NS, Osinska H, Hambleton MA, Brunskill EW, Sayen MR, Gottlieb RA, Dorn GW, Robbins J, Molkenin JD (2005). Loss of cyclophilin D reveals a critical role for mitochondrial permeability transition in cell death. *Nature.* 434: 658–662.
- Balk J, Leaver CJ (2001). The PET1-CMS mitochondrial mutation in sunflower is associated with premature programmed cell death and cytochrome c release. *Plant Cell.* 13: 1803–1818.
- Becker C, Shutov AD, Nong VH, Senyuk VI, Jung R, Horstmann C, Fischer J, Nielsen NC, Muntz K (1995). Purification, cDNA cloning and characterization of proteinase B, an asparagine-specific endopeptidase from germinating vetch (*Vicia sativa* L.) seeds. *Eur. J. Biochem.* 228: 456-462.
- Belenghi B, Romero-Puertas MC, Vercammen D, Brackener A, Inzé D, Delledonne M, Van Breusegem F (2007). Metacaspase activity of *Arabidopsis thaliana* is regulated by S-nitrosylation of a critical cysteine residue. *J. Biol. Chem.* 282: 1352–1358.
- Bernardi P (1999). Mitochondrial transport of cations: channels, exchangers, and permeability transition. *Physiol. Rev.* 79:1127–1155.
- Bernardi P, Petronilli V, Di Lisa F, Forte M (2001). A mitochondrial perspective on cell death. *Trends Biochem. Sci.* 26: 112–117.
- Birnbaum MJ (2004). On the Interaction between hexokinase and the mitochondrion. *Dev. Cell.* 7: 781–782.
- Bolduc N, Brisson LF (2002). Antisense down regulation of NtBI-1 in tobacco BY-2 cells induces accelerated cell death upon carbon starvation. *FEBS Lett.* 532: 111–114.
- Bolduc N, Ouellet M, Pitre F, Brisson LF (2003). Molecular characterization of two plant BI-1 homologues which suppress Bax-induced apoptosis in human 293 cells. *Planta.* 216: 377–386.
- Bouche N, Bouchez D (2001). *Arabidopsis* gene knockout: phenotype wanted. *Curr. Opin. Plant Biol.* 4: 111–117.
- Bozhkov PV, Filanova LH, Suarez MF, Helmersson A, Smertenko AP, Zhivotovsky B, Von Arnold S (2004). VEIDase is a principal caspase-like activity involved in plant programmed cell death and essential for embryonic pattern formation. *Cell Death Differ.* 11: 175–182.
- Bozhkov PV, Suarez MF, Filanova LH, Daniel G, Zamyatnin AA, Rodriguez-Nieto Jr. S, Zhivotovsky B, Smertenko A (2005). Cysteine protease mclI-Pa executes programmed cell death during plant organogenesis. *Proc. Natl. Acad. Sci. USA.* 102: 14463–14468.
- Bryson JM, Coy PE, Gottlob K, Hay N, Robey RB (2002). Increased hexokinase activity, of either ectopic or endogenous origin, protects renal epithelial cells against acute oxidant-induced cell death. *J. Biol. Chem.* 277: 11392–11400.
- Burns TF, El-Deiry WS (2001). Identification of Inhibitors of TRAIL-Induced Death (ITIDs) in the TRAIL sensitive colon carcinoma cell line, SW480, using a genetic approach. *J. Biol. Chem.* 276: 37879–37886.
- Callard D, Axelos M, Mazzolini L (1996). Novel marker for late phases of the growth cycle of *Arabidopsis thaliana* cell-suspension cultures are expressed during organ senescence. *Plant Physiol.* 112: 705–715.
- Chinnaiyan AM, Dixit VM (1996). The cell-death machine. *Current Biol.* 6: 555–562.
- Cohen GM (1997). Caspases: the executioners of apoptosis. *Biochem. J.* 326: 1-16.
- Cohen JJ (1993). Apoptosis. *Immunol. Today* 14: 126–130.
- D'Silva I, Poirier GG, Heath MC (1998). Activation of cysteine proteases in cowpea plants during the hypersensitive response: a form of programmed cell death. *Exp. Cell Res.* 245: 389–399.
- Danon A, Rotari VI, Gordon A, Mailhac N, Gallois P (2004). Ultraviolet-C Overexposure Induces Programmed Cell Death in *Arabidopsis*, Which Is Mediated by Caspase-like Activities and Which Can Be Suppressed by Caspase Inhibitors, p35 and Defender against Apoptotic Death. *J. Biol. Chem.* 279: 779–787.
- Danon A, Gallois P (1998). UV C radiation induces apoptotic like

- changes in *Arabidopsis thaliana*. FEBS Lett. 437: 131–136.
- De Jong AJ, Hoerberichts FA, Yakimova ET, Maximova E, Woltering EJ (2000). Chemical-induced apoptotic cell death in tomato cells: involvement of caspase-like proteases. *Planta*. 211: 656–662.
- de Murcia G, Ménissier de Murcia J (1994). Poly (ADPribose) polymerase: a molecular nick-sensor. *Trends Biochem. Sci.* 19: 172–176.
- del Pozo O, Lam E (1998). Caspase and programmed cell death in the hypersensitive response of plants to pathogens. *Current Biol.* 8: 1129–1132.
- del Pozo O, Lam E (2003). Expression of the baculovirus p35 protein in tobacco affects cell death progression and compromises N gene mediated disease resistance response to tobacco mosaic virus. *Mol. Plant–Microbe Interact.* 16: 485–494.
- Delorme VGR, McCabe PF, Kim DJ, Leaver CJ (2000). A matrix metalloproteinase gene is expressed at the boundary of senescence and programmed cell death in cucumber. *Plant Physiol.* 123: 917–927.
- Desagher S, Martinou JC (2000). Mitochondria as the central control point of apoptosis. *Trends Cell Biol.* 10: 369–377.
- Domínguez F, Moreno J, Cejudo FJ (2001). The nucellus degenerates by a process of programmed cell death during the early stages of wheat grain development. *Planta*. 231: 352–360.
- Domínguez F, Moreno J, Cejudo FJ (2004). A gibberellin-induced nuclease is localized in the nucleus of wheat aleurone cells undergoing programmed cell death. *J. Biol. Chem.* 279: 11530–11536.
- Domínguez F, Cejudo FJ (2006). Identification of a nuclear-localized nuclease from wheat cells undergoing programmed cell death that is able to trigger DNA fragmentation and apoptotic morphology on nuclei from human cells. *Biochem. J.* 397: 529–536.
- Downward J (2003) Metabolism meets death. *Nature* 424:896–897.
- Earnshaw WC (1995). Nuclear changes in apoptosis. *Curr. Opin. Cell Biol.* 7: 337–343.
- Earnshaw WC, Martins LM, Kaufmann SH (1999). Mammalian caspases: structure, activation, substrates, and functions during apoptosis. *Annu. Rev. Cell Biol.* 68: 383–424.
- Eichmann, R, Holger S, Kogel K-H Hu³, ckelhoven R (2004). The barley apoptosis suppressor homologue Bax inhibitor-1 compromises nonhost penetration resistance of barley to the inappropriate pathogen *Blumeria graminis* f. sp. *tritici*. *Mol. Plant Microbe Interact.* 17: 484–490.
- Ellis RE, Yuan JY, Horvitz HR (1991). Mechanisms and functions of cell death. *Annu. Rev. Cell Biol.* 7: 663–698.
- Enari M, Sakahira H, Yokoyama H, Okawa K, Iwamatsu A, Nagata S (1998). A caspase-activated DNase that degrades DNA during apoptosis. *Nature (London)*. 391: 43–50.
- Fath A, Bethke PC, Jones RL (1999). Barley aleurone cell death is not apoptotic: characterization of nuclease activities and DNA degradation. *Plant J.* 20: 305–315.
- Filonova LH, Bozhkov PV, Brukhin VB, Daniel G, Zhivotovsky B, von Arnold S (2000). Two waves of programmed cell death occur during formation and development of somatic embryos in the gymnosperm, Norway spruce. *J. Cell Sci.* 113: 4399–4411.
- Gallois P, Makishima T, Hecht V, Despres B, Laudie M, Nishimoto T, Cooke R (1997). An *Arabidopsis thaliana* cDNA complementing a hamster apoptosis suppressor mutant. *Plant J.* 11: 1325–1331.
- Garcia-Calvo M, Peterson EP, Leiting B, Ruel R, Nicholson DW, Thornberry NA (1998). Inhibition of human caspase by peptide-based and macromolecular inhibitors. *J. Biol Chem.* 273: 32608–32613.
- Gevaert K, Van Damme P, Ghesquiere B, Vandekerckhove J (2006). Protein processing and other modifications analyzed by diagonal peptide chromatography. *Biochem. Biophys. Acta.* 1764: 1801–1810.
- Godbole J, Varghese A, Sarin MK, Mathew (2003). VDAC is a conserved element of death pathways in plant and animal systems. *Biochim. Biophys. Acta.* 1642: 87–96.
- Gottlob K, Majewski N, Kennedy S, Kandel E, Robey RB, Hay N (2001). Inhibition of early apoptotic events by Akt/PKB is dependent on the first committed step of glycolysis and mitochondrial hexokinase. *Genes Dev.* 15: 1406–1418.
- Gray J (2004). Paradigms of the evolution of programmed cell death. In 'Programmed Cell Death in Plants'. (Eds J Gray) (CRC Press: Boca Raton). pp. 1–25.
- Green DR, Kroemer G (2004) The pathophysiology of mitochondrial cell death. *Sci.* 305: 627–629.
- Green DR, Reed JC (1998). Mitochondria & apoptosis. *Sci.* 281: 1309–1312.
- Grutter MG (2000). Caspases: key players in programmed cell death. *Curr. Opin. Struct. Biol.* 10: 649–655.
- Halenbeck R, MacDonald H, Roulston A, Chen TT, Conroy L, Williams, LT (1998). CPAN, a human nuclease regulated by the caspase-sensitive inhibitor DFF45. *Curr. Biol.* 23: 537–540.
- Hansen G (2000). Evidence for *Agrobacterium*-induced apoptosis in maize cells. *Mol. Plant Microbe Interact.* 13: 649–657.
- Hara-Nishimura I, Takeuchi Y, Inoue K, Nishimura M (1993). Vesicle transport and processing of the precursor to 2S albumin in pumpkin. *Plant J.* 4: 793–800.
- Hara-Nishimura I (2003) Asparaginyl endopeptidase. In 'Handbook of Proteolytic Enzymes'. (Eds AJ Barrett, ND Rawlings, JF Woessner) (Academic Press). pp. 846–849.
- Hara-Nishimura I, Hatsugai N, Nakaune S, Kuroyanagi M, Nishimura M (2005). Vacuolar processing enzyme: an executor of cell death. *Curr. Opin. Plant Biol.* 8: 404–408.
- Hara-Nishimura I, Inoue K, Nishimura M (1991). A unique vacuolar processing enzyme responsible for conversion of several proprotein precursors into the mature forms. *FEBS Lett.* 294: 89–93.
- Hara-Nishimura I, Kinoshita T, Hiraawa N, Nishimura M (1998) Vacuolar processing enzymes in protein-storage vacuoles and lytic vacuoles. *J. Plant Physiol.* 152: 668–674.
- Hara-Nishimura I, Nishimura M (1987). Proglobulin processing enzyme in vacuoles isolated from developing pumpkin cotyledons. *Plant Physiol.* 85: 440–445.
- Hatsugai N, Kuroyanagi M, Nishimura M, Hara-Nishimura I (2006). A cellular suicide strategy of plants: vacuole-mediated cell death. *Apoptosis.* 11: 905–911.
- Hatsugai N, Kuroyanagi M, Yamada K, Meshi T, Tsuda S, Kondo M, Nishimura M, Hara-Nishimura I (2004) A plant vacuolar protease, VPE, mediates virus-induced hypersensitive cell death. *Sci.* 305: 855–858.
- Heath MC (2000). Hypersensitive response-related death. *Plant Mol. Biol.* 44: 321–334.
- Hengartner MO (1998). Apoptosis: Death by crowd control. *Sci.* 281:1298–1299.
- Hiraiwa N, Nishimura M, Hara-Nishimura I (1997). Expression and activation of the vacuolar processing enzyme in *Saccharomyces cerevisiae*. *Plant J.* 12: 819–829.
- Hiraiwa N, Nishimura M, Hara-Nishimura I (1999). Vacuolar processing enzyme is self-catalytically activated by sequential removal of the C-terminal and N-terminal propeptides. *FEBS Lett.* 447: 213–216.
- Hoerberichts FA, ten Have A, Woltering EJ (2003). A tomato metacaspase gene is upregulated during programmed cell death in *Botrytis cinerea* infected leaves. *Planta*. 217: 517–522.
- Hoerberichts FA, Woltering EJ (2002). Multiple mediators of plant programmed cell death: interplay of conserved cell death mechanisms and plant-specific regulators. *Bioessays* 25: 47–57.
- Hong NA, Kabra NH, Hsieh SN, Cado D, Winoto A (1999). In vivo overexpression of Dad1, the defender against apoptotic death-1, enhances cell proliferation but does not protect against apoptosis. *J. Immunol.* 163:1888–1893.
- Huckelhoven R, Dechert C, Kogel KH (2003). Overexpression of barley BAX inhibitor 1 induces breakdown of mlo-mediated penetration resistance to *Blumeria graminis*. *Proc. Natl. Acad. Sci. USA.* 100:5555–5560.
- Ito J, Fukuda H (2002). ZEN1 is a key enzyme in the degradation of nuclear DNA during programmed cell death of tracheary elements. *Plant Cell.* 14: 3201–3211.
- Jones AM (2000). Does the plant mitochondrion integrate cellular stress and regulate programmed cell death? *Trends Plant Sci.* 5: 225–230.
- Jordan ND, Franklin FCH, Franklin-Tong VE (2000). Evidence for DNA fragmentation triggered in the self-incompatibility response in pollen of *Papaver rhoeas*. *Plant J.* 23: 471–479.
- Katsuhara M (1997) Apoptosis-like cell death in barley roots under salt stress. *Plant Cell Physiol.* 38:1091–1093.
- Kaufmann SH, Hengartner MO (2001). Programmed cell death: alive

- and well in the new millennium. *Trends Cell Biol.* 11: 526–534.
- Kawai M, Pan L, Reed JC, Uchimiya H (1999). Evolutionally conserved plant homologue of the Bax inhibitor-1 (BI-1) gene capable of suppressing Bax-induced cell death in yeast. *FEBS Lett.* 464: 143–147.
- Kawai-Yamada M, Jin L, Yoshinaga K, Hirata A, Uchimiya H (2001). Mammalian Bax-induced plant cell death can be down-regulated by over expression of Arabidopsis Bax inhibitor-1 (AtBI-1). *Proc.Natl.Acad.Sci. USA.* 98: 12295-1300.
- Kawai-Yamada M, Ohmori Y, Uchimiya H (2004). Dissection of Arabidopsis Bax inhibitor-1 suppressing Bax-, hydrogen peroxide-, and salicylic acid-induced cell death. *Plant Cell.* 16: 21–32.
- Kelleher DJ, Gilmore R.(1997). DAD1, the defender against apoptotic cell death, is a subunit of the mammalian oligosaccharyl-transferase. *Proc.Natl.Acad.Sci. USA.* 94: 4994–4999.
- Kerr JFR, Wyllie AH, Currie AR (1972). Apoptosis: a basic biological phenomenon with wide-ranging implications in tissue kinetics. *Br. J. Cancer.* 26: 239–257.
- Kim M, Lim JH, Ahn CS, Park K, Kim GT, Kim WT, Pai HS (2006). Mitochondria-associated Hexokinases play a role in the control of Programmed Cell Death in *Nicotiana benthamiana*. *The Plant Cell.* 18: 2341–2355.
- Kinoshita T, Nishimura M, Hara-Nishimura I (1995). Homologues of a vacuolar processing enzyme that are expressed in different organs in Arabidopsis thaliana. *Plant Mol. Biol.* 29: 81–89.
- Koukalova B, Kovarik A, Fajkus J, Siroky J (1997). Chromatin fragmentation associated with apoptotic changes in tobacco cells exposed to cold stress. *FEBS Lett.* 414: 289–292.
- Krause M, Durner J (2004). Harpin inactivates mitochondria in Arabidopsis suspension cells. *Mol. Plant Microbe Interact.* 17: 131–139.
- Kroemer G, Reed JC (2000). Mitochondrial control of cell death. *Nat. Med.* 6: 513–519.
- Kuida K, Zheng TS, Na SQ, Kuan CY, Yang D, Karasuyama H, Rakic P, Flavell RA (1996). Decreased apoptosis in the brain and premature lethality in CPP32-deficient mice *Nature.* 384: 368–372.
- Kumar S (2007) Caspase function in programmed cell death. *Cell Death Differ.* 14: 32–43.
- Kuroyanagi M, Yamada K, Hatsugai N, Kondo M, Nishimura M, Hara-Nishimura I (2005). Vacuolar processing enzyme is essential for mycotoxin induced cell death in Arabidopsis thaliana. *J. Biol. Chem.* 280: 32914–32920.
- Kuroyanagi M, Nishimura M, Hara-Nishimura I (2002). Activation of Arabidopsis vacuolar processing enzyme by self-catalytic removal of an auto-inhibitory domain of the C-terminal propeptide. *Plant Cell Physiol.* 43: 143-151.
- Kusaka K, Tada Y, Shigemi T, Sakamoto M, Nakayashiki H, Tosa Y, Mayama S (2004) Coordinate involvement of cysteine protease and nuclease in the executive phase of plant apoptosis. *FEBS Lett.* 578: 363–367.
- Lacomme C, Roby D (1999). Identification of new early markers of the hypersensitive response in Arabidopsis thaliana. *FEBS Lett.* 459: 149–153.
- Lacomme C, Santa cruz S (1999). Bax induced cell death in tobacco is similar to hypersensitive response. *Proc. Natl. Acad. Sci. USA.* 96: 7956-7961.
- Lam E (2005). Vacuolar proteases living up programmed cell death. *Trends Cell Biol.* 15:124–127.
- Lam E, Del Poza O (2000). Caspase-like protease involvement in the control of plant cell death. *Plant Mol. Biol.* 44: 417–428.
- Lam E, Kato N, Lawton M (2001). Programmed Cell Death, mitochondria and the plant hypersensitive response. *Nature.* 411: 848-853.
- Lazebnik YA, Kaufmann SH, Desnoyers S, Poirier GG, Earnshaw WC (1994). Cleavage of poly(ADPribose)polymerase by a proteinase with properties like ICE. *Nature.* 371: 346–347.
- Lin JS, Wang Y, Wang GX (2005). Salt stress-induced programmed cell death via Ca²⁺-supercript stop-mediated mitochondrial permeability transition in tobacco protoplasts. *Plant Growth Regul.* 45: 243–250.
- Lincoln JE, Richael C, Overduin B, Smith K, Bostock R, Gilchrist DG (2002). Expression of the antiapoptotic baculovirus p35 gene in tomato blocks programmed cell death and provides broad-spectrum resistance to disease. *Proc. Natl. Acad. Sci. USA.* 99: 15217–15221.
- Liu X, Li P, Widlak P, Zou H, Wo X, Garrard WT, Wang X (1998). The 40-kDasubunit of DNA fragmentation factor induces DNA fragmentation and chromatin condensation during apoptosis. *Proc. Natl. Acad. Sci. USA.* 95: 8461–8466.
- Machida K, Ohta Y, Osada H (2006). Suppression of apoptosis by cyclophilin D via stabilization of hexokinase II mitochondrial binding in cancer cells. *J. Biol. Chem.* 281: 14314–14320.
- Madeo F, Herker E, Maldener C, Wissing S, Lachelt S, Herlan M, Fehr M, Lauber K, Sigrist SJ, Wesselborg S, Frohlich KU (2002). A caspase-related protease regulates apoptosis in yeast. *Mol. Cell* 9: 911–917.
- Majewski N, Noqueira V, Bhaskar P, Coy PE, Skeen JE, Gottlob K, Chandel NS, Thompson CB, Robey RB, Hay N (2004). Hexokinase-mitochondria interaction mediated by Akt is required to inhibit apoptosis in the presence or absence of Bax and Bak. *Mol. Cell* 16: 819–830.
- Martinou J-C (1999). Apoptosis: Key to the mitochondrial gate. *Nature.* 399: 411–412.
- Mashima T, Naito M, and Tsuruo T (1999) Caspase-mediated cleavage of cytoskeletal actin plays a positive role in the process of morphological apoptosis *Oncogene.* 18: 2423–2430.
- Matsumura H, Nirasawa S, Kiba A, Urasaki N, Saitoh H, Ito M, Kawai-Yamada M, Uchimiya H, Terauchi R (2003). Overexpression of Bax inhibitor suppresses the fungal elicitorinduced cell death in rice (*Oryza sativa* L.) cells. *Plant J.* 33: 425–434.
- McCabe PF, Levine A, Meijer PJ, Tapon NA, Pennell RI (1997). A programmed cell death pathway activated in carrot cells cultured at low cell density. *Plant J.* 12: 267–280.
- Merry DE, Korsmeyer SJ (1997). Bcl-2 gene family in the nervous system. *Annu. Rev. Neurosci.* 20: 245–267.
- Miller LJ, Marx J (1998) Apoptosis. *Sci.* 281:1301.
- Mitsuahara I, Malic AM, Miura M, Ohashi Y (1999). Animal cell death suppressors Bcl-XL and Ced-9 inhibit cell death in tobacco plants. *Curr. Biol.* 9: 775-778.
- Mittler R, Lam E (1997). Characterization of nuclease activities and DNA fragmentation induced upon hypersensitive response cell death and mechanical stress. *Plant Mol. Biol.* 34: 209–221.
- Nakagawa T, Shimizu S, Watanabe T, Yamaguchi O, Otsu K, Yamagata H, Inohara H, Kubo T, Tsujimoto Y (2005). Cyclophilin D-dependent mitochondrial permeability transition regulates some necrotic but not apoptotic cell death. *Nature.* 434: 652–658.
- Nakaune S, Yamada K, Kondo M, Kato T, Tabata S, Nishimura M, Hara-Nishimura I (2005). A novel-type VPE, dVPE, is involved in seed coat formation at the early stage of seed development. *Plant Cell* 17: 876-887.
- Navarre DA, Wolpert TJ (1999). Victorin induction of an apoptotic/senescence-like responses in oats. *Plant Cell.* 11: 237–249.
- Nicholson DW (1999). Caspase structure, proteolytic substrates, and function during apoptotic cell death. *Cell Death Differ.* 6: 1028-1042.
- Nicholson DW, Thornberry NA (1997). Caspases: The killer proteases. *Trends Biochem. Sci.* 22: 299–306.
- O'Brien IEW, Baguley BC, Murray BG, Morris BAM, Ferguson IB (1998). Early stages of the apoptotic pathway in plant cells are reversible. *Plant J.* 13: 803–814.
- O'Farrell M (1995) ADP-ribosylation reactions in plants. *Biochimie.* 77: 486–491.
- Obara K, Kuriyama H, Fukuda H (2001). Direct evidence of active and rapid nuclear degradation triggered by vacuole rupture during programmed cell death in *Zinnia*. *Plant Physiol.* 125: 615–626.
- Oberhammer F, Wilson JW, Dive C, Morris ID, Hickman JA, Wakeling AE, Walker PR, Sikorska M (1993). Apoptotic death in epithelial cells: Cleavage of DNA to 300 and or 50kb fragments prior to or in the absence of internucleosomal fragmentation. *EMBO J.* 12: 3679–3684.
- Orzaez D, Granell A (1997a). DNA fragmentation is regulated by ethylene during carpel senescence in *Pisum sativum*. *Plant J.* 11: 137–144.
- Orzaez D, Granell A (1997b). The plant homologue of the defender against apoptotic death gene is down-regulated during senescence of flower petals. *FEBS Lett.* 404: 275–278.

- Pandey S, Walker PR, Sikorska M (1994) Separate pools of endonuclease activity are responsible for internucleosomal and high molecular mass DNA fragmentation during apoptosis. *Biochem. Cell Biol.* 72: 625–629.
- Pastorino JG, Shulga N, Hoek JB (2002). Mitochondrial of hexokinase II inhibits Bax-induced cytochrome c release and apoptosis. *J. Biol. Chem.* 277: 7610–7618.
- Peitsch MC, Polzar B, Stepham H, Crompton T, Mac Donald HR, Mannherz HG. Tshopp J (1993). Characterization of the endogenous deoxyribonuclease involved in nuclear DNA degradation during apoptosis (Programmed cell death). *Embo J.* 12: 371–377.
- Pennell RI, Lamb C (1997). Programmed cell death in plants. *Plant Cell.* 9: 1157–1168.
- Qiao J, Mitsuhara I, Yozaki Y, Sakano K, Gotoh Y, Miura M, Ohashi Y (2002). Enhanced resistance to salt, cold & wound stresses by overproduction of animal cell death suppressors Bcl-xl and Ced-9 in tobacco cells-Their possible contribution through improved function of organelle. *Plant Cell Physiol.* 43: 992-1005.
- Rojo E, Martin R, Carter C, Zouhar J, Pan S, Plotnikova J, Jin H, Paneque M, Sanchez-Serrano JJ, Baker B (2004). VPE gamma exhibits a caspase-like activity that contributes to defense against pathogens. *Curr. Biol.* 14: 1897-1906.
- Rudel T (1999). Caspase inhibitors in prevention of apoptosis. *Herz.* 24: 236–241.
- Ryerson DE, Heath MC (1996). Cleavage of nuclear DNA into oligonucleosomal fragments during cell death induced by fungal infection or by abiotic treatments. *Plant Cell.* 8: 393–402.
- Samejima K, Earnshaw WC (2005). Trashing the genome: the role of nucleases during apoptosis. *Nat. Rev. Mol. Cell Biol.* 6: 677–688.
- Sachez P, deTorres Zebala M, Grant M (2000). AtBI-1, a plant homologue of Bax inhibitor-1, suppresses Bax-induced cell death in yeast and is rapidly upregulated during wounding and pathogen challenge. *Plant J.* 21: 393–399.
- Sanmartin M, Jaroszewski L, Raikhel NV, Rojo E (2005). Caspases. Regulating death since the origin of life. *Plant Physiol.* 137: 841–847.
- Saviani EE, Orsi CH, Oliveira JFP, Pinto-Maglio CAF and Salgado I (2002). Participation of the mitochondrial permeability transition pore in nitric oxide-induced plant cell death. *FEBS Lett.* 510: 136–140.
- Schussler EE, Longstreth DL (2000). Changes in cell structure during the formation of root aerenchyma in *Sagittaria lancifolia* (Alismataceae). *Amer. J. Bot.* 87: 12-19.
- Shah NK, Taneja TK, Hasnain SE (2000). Mitochondria can power cells to life and death. *Resonance.* 5: 74–84.
- Shimizu S, Ide T, Yanagida T, Tsujimoto Y (2000). Electrophysiological study of a novel large pore formed by Bax and the voltage-dependent anion channel that is permeable to cytochrome c. *J. Biol. Chem.* 27: 12321-12325.
- Shimizu S, Narita M, Tsujimoto Y (1999). Bcl-2 family proteins regulate the release of apoptogenic cytochrome c by the mitochondrial channel VDAC. *Nature.* 399: 483–487.
- Simeonova E, Sikora A, Charzynska M, Mostowska A (2000). Aspects of programmed cell death during leaf senescence of mono- and dicotyledonous plants. *Protoplasma.* 214: 93-101.
- Smertenko AP, Bozhkov PV, Filonova L, von Arnold S, Hussey PJ (2003) Re-organisation of the cytoskeleton during developmental programmed cell death in *Picea abies* embryos *Plant J.* 33: 813–824.
- Stein JC, Hansen G (1999). Mannose induces an endonuclease responsible for DNA laddering in plant cells. *Plant Physiol.* 121: 71–79.
- Stennicke HR, Salvesen GS (1998). Properties of the caspases. *Biochim. Biophys. Acta.* 1387: 17-31.
- Suarez M, Filonova L, Smertenko A, Savenkov E, Clapham D, von Arnold S, Zhivotovsky B, Bozhkov P (2004). Metacaspase-dependent programmed cell death is essential for plant embryogenesis. *Curr. Biol.* 14: R339–R340.
- Sugimoto A, Hozak RR, Nakashima T, Nishimoto T, Rothman JH (1995). Dad-1, an endogenous programmed cell death suppressor in *Caenorhabditis elegans* and vertebrates. *EMBO J.* 14: 4434–4441.
- Sugiyama M, Ito J, Aoyagi S, Fukuda H (2004). Endonucleases. *Plant Mol. Biol.* 44: 387–397.
- Sugiyama T, Shimizu S, Matsuoka Y, Yoneda Y, Tsujimoto Y (2002). Activation of mitochondrial voltage-dependent anion channel by a proapoptotic BH3-only protein Bim. *Oncogene.* 21: 4944–4956.
- Sun YL, Zhao Y, Hong X, Zhai ZH (1999). Cytochrome c release and caspase activation during menadione induced apoptosis in plants. *FEBS Lett.* 462: 317–321.
- Swidzinski JA, Leaver CJ, Sweetlove LJ (2004). A proteomic analysis of plant programmed cell death. *Phytochem.* 65: 1829–1838.
- Tada Y, Hata S, Takata Y, Nakayashiki H, Tosa Y, Mayama S (2001). Induction and signaling of an apoptotic typified by DNA laddering in the defence response of response oats to infection and elicitors. *Mol. Plant Microbe Interact.* 14: 477–486.
- Tanaka Y, Makishima T, Sasabe M, Ichinose Y, Shiraishi T, Nishimoto T, Yamada T (1997). Dad-1: A putative programmed cell death suppressor gene in rice. *Plant Cell Physiol.* 38: 379–383.
- Thornberry NA, Lazebnik Y (1998). Caspases enemies within. *Science.* 281: 1312–1316.
- Tian RH, Zhang GY, Yan CH, Dai YR (2000). Involvement of poly (ADP-ribose) polymerase and activation of caspase-3-like protease in heat shock-induced apoptosis in tobacco suspension cells. *FEBS Lett.* 474: 11–15.
- Timmer JC, Salvesen GS (2007). Caspase substrates. *Cell Death Differ.* 14: 66–72.
- Tiwari BS, Belenghi B, Levine A (2002). Oxidative stress increased respiration and generation of reactive oxygen species, resulting in ATP depletion, opening of mitochondrial permeability transition, and programmed cell death. *Plant Physiol.* 128: 1271–1281.
- Uren AG, O'Rourke K, Aravind L, Pissabaro MT, Sheshagiri S, Koonin EV, Dixit VM (2000). Identification of paracaspases and metacaspases: Two ancient families of caspase-like proteins, one of which plays a key role in MALT Lymphoma. *Mol. Cell.* 6: 961–967.
- Van der Biezen EA, Jones JDG (1998). The NB-ARC domain: a novel signalling motif shared by plant resistance gene products and regulators of cell death in animals. *Curr. Biol.* 8: 226–227.
- van Gurp M, Festjens N, van Loo G, Saelens X, Vandenabeele P (2003). Mitochondrial intermembrane proteins in cell death. *Biochem. Biophys. Res. Commun.* 304: 487–497.
- Vaux DL, Korsmeyer SJ (1999). Cell death in development. *Cell.* 96: 245–254.
- Vercammen D, Belenghi B, van de Cotte B, Beunens T, Gavigan JA, De Rycke R, Brackener A, Inzé D, Harris JL, Van Breusegem F (2006). Serpin1 of *Arabidopsis thaliana* is a suicide inhibitor for metacaspase 9. *J. Mol. Biol.* 364: 625–636.
- Vercammen D, van de Cotte B, De Jaeger G, Eeckhout D, Casteels P, Vandepoele K, Vandenberghe I, Van Beeumen J, Inzé D, Van Breusegem F (2004). Type II metacaspases Atmc4 and Atmc9 of *Arabidopsis thaliana* cleave substrates after arginine and lysine. *J. Biol. Chem.* 279: 45329–45336.
- Wang H, Li J, Bostock RM, Gilchrist DG (1996b). The apoptosis: a functional paradigm for programmed plant cell death induced by a host-selective phytotoxin and invoked during development. *Plant Cell.* 8: 375–391.
- Wang M, Hoekstra S, van Bergen S, Lamers GEM, Oppedijk BJ, van der Heijden MW, de Priester W, Schilperoort RA (1999). Apoptosis in developing anthers and the role of ABA in this process during androgenesis in *Hordeum vulgare* L. *Plant Mol. Biol.* 39: 489–501.
- Wang M, Oppedijk BJ, Lu X, van Duijn B, Schilperoort RA (1996a). Apoptosis in barley aleurone during germination and its inhibition by abscisic acid. *Plant Mol. Biol.* 32: 1125–1134.
- Wang M-B, Waterhouse PM (2002) Application of gene silencing in plants. *Curr. Opin. Plant Biol.* 5: 146–150.
- Watanabe N, Lam E (2006). *Arabidopsis* Bax inhibitor-1 functions as an attenuator of biotic and abiotic types of cell death. *Plant J.* 45: 884–894.
- Wertz IE, Hanley MR (1996). Diverse molecular provocation of programmed cell death. *Trends Biochem. Sci.* 21: 359–364.
- White E (1996) Life, death, and the pursuit of apoptosis. *Genes Dev.* 10: 1–15.
- White K, Grether ME, Abrams JM, Young L, Farrell K, Steller H (1994). Genetic control of programmed cell death in *Drosophila*. *Science.* 264: 677–683.
- Wilson JE (2003). Isozymes of mammalian hexokinase: Structure, subcellular localization and metabolic function. *J. Exp. Biol.* 206: 2049–2057.

- Wilson KP, Black JAF, Thomson JA., Kim EE, Griffith JP, Navia MA, Murcho MA, Chambers SP, Aldape RA, Raybuck SA (1994). Structure and mechanism of interleukin-1 beta converting enzyme. *Nature*. 370: 270-274.
- Woltering EJ, van der Bent A, Hoeberichts FA (2002). Do plant caspases exist? *Plant Physiol*. 130: 1764-1769.
- Wyllie AH (1980). Glucocorticoid-induced thymocyte apoptosis is associated with endogenous endonuclease activation. *Nature* 284: 555-556.
- Xie Z, Chen Z (2000). Harpin-induced hypersensitive cell death is associated with altered mitochondrial functions in tobacco cells. *Mol. Plant Microbe Interact*. 13: 183-190.
- Xu Q, Reed JC (1998). Bax inhibitor-1, a mammalian apoptosis suppressor identified by functional screening in yeast. *Mol. Cell*. 1: 337-346.
- Xu Y, Hanson MR (2000). Programmed cell death during pollination-induced petal senescence in petunia. *Plant Physiol*. 122: 1323-1333.
- Yamada K, Shimada T, Nishimura M, Hara-Nishimura I (2005). A VPE family supporting various vacuolar functions in plants. *Physiol. Plant. Special Issue* 123: 369-375.
- Yamada T, Marubashi W, Niwa M (2000). Apoptotic cell death induces temperature-sensitive lethality in hybrid seedlings and calli derived from the cross of *Nicotiana suaveolens* x *N. tabacum*. *Planta*. 211: 614-622.
- Yao N, Eisfelder BJ, Marvin J, Greenberg JT (2004). The mitochondrion—an organelle commonly involved in programmed cell death in *Arabidopsis thaliana*. *Plant J*. 40: 596-610.
- Yen CH, Yang CH (1998). Evidence for programmed cell death during leaf senescence in plants. *Plant Cell Physiol*. 39: 922-927.
- Yokota S, Okabayashi T, Yokosawa N, Fuji N (2004). Growth arrest of epithelial cells during measles virus infection is caused by upregulation of interferon regulatory factor 1. *J. Virol*. 78: 4591-4598.
- Young TE, Gallie DR (1999). Analysis of programmed cell death in wheat endosperm reveals differences in endosperm development between cereals. *Plant Mol. Biol*. 39: 915-926.
- Young TE, Gallie DR (2000). Regulation of programmed cell death in maize endosperm by abscisic acid. *Plant Mol. Biol*. 42: 397-414.
- Young TE, Gallie DR, Demason DA (1997). Ethylene mediated programmed cell death during maize endosperm development of wild-type and shrunken2 genotypes. *Plant Physiol*. 115: 737-751.
- Yu L-H, Kawai-Yamada M, Naito M, Watanabe K, Reed JC, Uchimiya H (2002). Induction of mammalian cell death by a plant Bax inhibitor. *FEBS Lett*. 512: 308-312.
- Yuan JY, Shaham S, Ledoux S, Ellis HM, Horvitz HR (1993). The *C. elegans* Cell Death Gene *ced-3* Encodes a Protein Similar to Mammalian Interleukin-1-Converting Enzyme. *Cell*. 75: 641-652.
- Zoratti M, Szabo I (1995). The mitochondrial permeability transition. *Biochim. Biophys. Acta* 1241: 139-176.